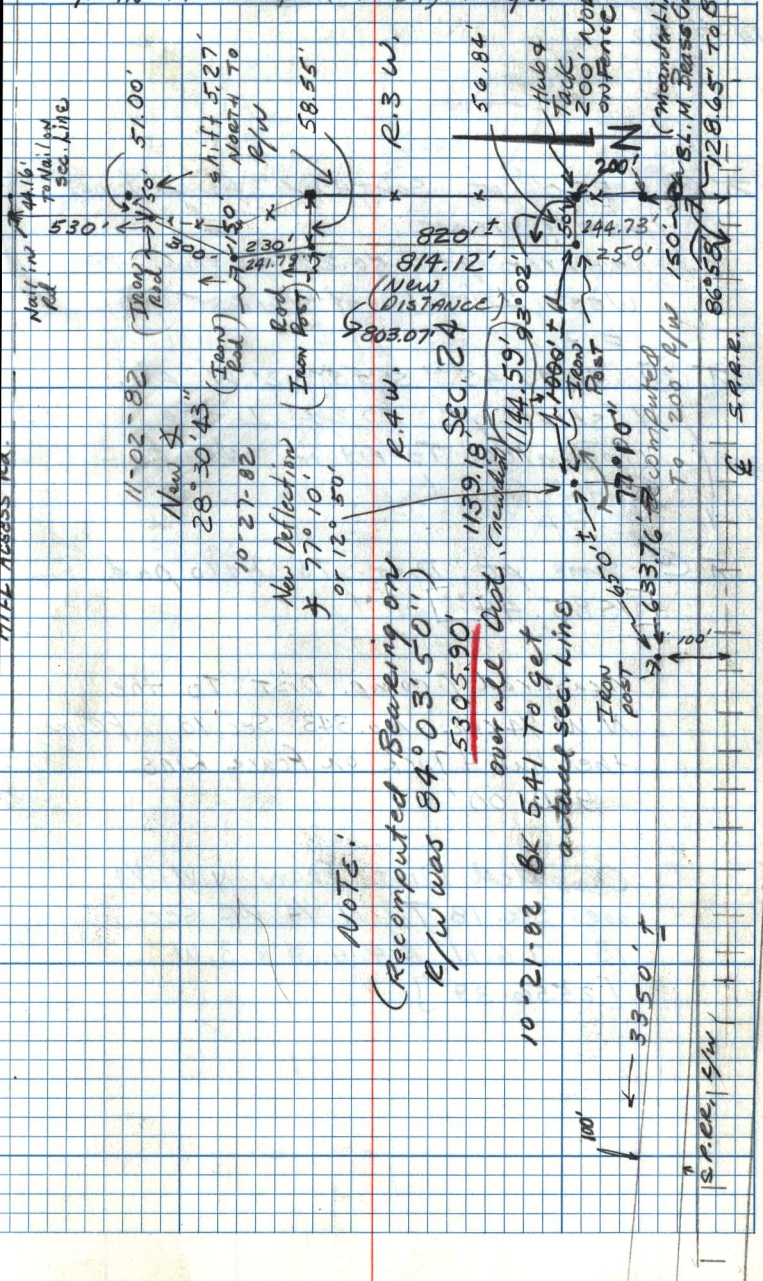


Little Mtn. Property
 Survey Sec. 24
 T. 6. N. R. 3. W. & R. 4. W. (MC-54)

Hillier Holmes
 Floyd Oct. 4 '82

7



NOTE:

(Recomputed Bearing on
 R/W was 84° 03' 50")

5305.90'
 overall dist. (calculated)

10-21-82 Bk 5.41 to get
 actual sec. line

← 3350' ±

100' S.P.E. SW

S.A.P.R.